



House Benedikt MOST

Oil Per Board: 40 uL Oil Pattern Distance: 38 Feet Volume Oil Total: 17.24 mL Total Boards Crossed: 431 Boards

Forward Oil Total: 10.56 mL
Forward Boards Crossed: 264 Boards

Reverse Oil Total: 6.68 mL
Reverse Boards Crossed: 167 Boards

Notes

Conditioner:
Prodigy

TransferType:
Transfer Brush

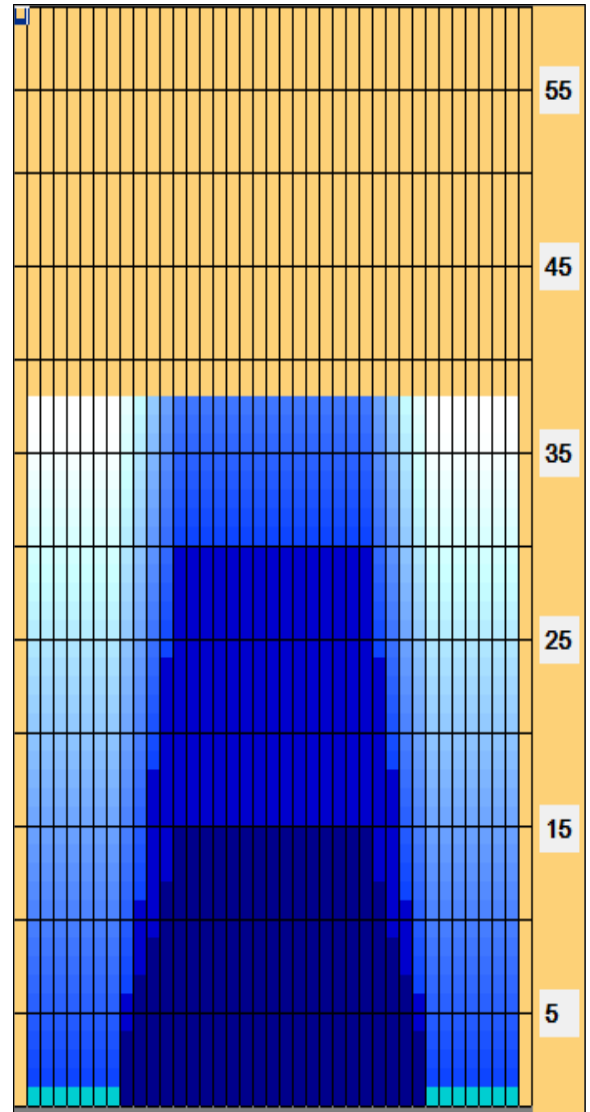
| | Start | Stop | Loads | Speed | Crossed | Start | End | Feet | T.Oil |
|---|-------|------|-------|-------|---------|-------|------|------|-------|
| 1 | 2L | 2R | 2 | 10 | 74 | 0.0 | 1.4 | 1.4 | 2960 |
| 2 | 9L | 9R | 2 | 10 | 46 | 1.4 | 4.2 | 2.8 | 1840 |
| 3 | 10L | 10R | 2 | 10 | 42 | 4.2 | 7.0 | 2.8 | 1680 |
| 4 | 11L | 11R | 2 | 10 | 38 | 7.0 | 9.8 | 2.8 | 1520 |
| 5 | 12L | 12R | 2 | 10 | 34 | 9.8 | 12.6 | 2.8 | 1360 |
| 6 | 13L | 13R | 2 | 10 | 30 | 12.6 | 15.4 | 2.8 | 1200 |
| 7 | 2L | 2R | 0 | 18 | 0 | 15.4 | 28.0 | 12.6 | 0 |
| 8 | 2L | 2R | 0 | 30 | 0 | 28.0 | 38.0 | 10.0 | 0 |

Forward

Reverse

Combined

Buff



| | Start | Stop | Loads | Speed | Crossed | Start | End | Feet | T.Oil |
|---|-------|------|-------|-------|---------|-------|------|------|-------|
| 1 | 2L | 2R | 0 | 30 | 0 | 38.0 | 30.0 | -8.0 | 0 |
| 2 | 13L | 13R | 2 | 22 | 30 | 30.0 | 23.8 | -6.2 | 1200 |
| 3 | 12L | 12R | 2 | 22 | 34 | 23.8 | 17.6 | -6.2 | 1360 |
| 4 | 11L | 11R | 2 | 22 | 38 | 17.6 | 11.4 | -6.2 | 1520 |
| 5 | 10L | 10R | 2 | 18 | 42 | 11.4 | 6.3 | -5.1 | 1680 |
| 6 | 9L | 9R | 1 | 14 | 23 | 6.3 | 4.4 | -1.9 | 920 |
| 7 | 2L | 2R | 0 | 10 | 0 | 4.4 | 0.0 | -4.4 | 0 |

Arrow Zone Ratios

| Item | 2-5L:16L-20 | 6-10L:16-20 | 11-15L:16L-20 | 16L-20:20-16R | 16L-20:20-16R | 20-16R:15-11R | 20-16R:10-6R | 20-16R:5-2R |
|------------|-------------|-------------|---------------|---------------|---------------|---------------|--------------|-------------|
| ul Arrow | 80 | 160 | 744 | 840 | 840 | 744 | 160 | 80 |
| Zone Ratio | 10.5 | 5.25 | 1.13 | 1 | 1 | 1.13 | 5.25 | 10.5 |

Track Zone Ratios

| Item | 3L-7L:18L-18R | 8L-12L:18L-18R | 13L-17L:18L-18R | 18L-18R:17R-13R | 18L-18R:12R-8R | 18L-18R:7R-3R |
|------------------|----------------------|---------------------|---------------------|----------------------|---------------------|----------------------|
| Description | Outside Track:Middle | Middle Track:Middle | Inside Track:Middle | Middle: Inside Track | Middle:Middle Track | Middle:Outside Track |
| Track Zone Ratio | 10.5 | 2.28 | 1 | 1 | 2.28 | 10.5 |

