



Prestige - Ústí nad Labem

Oil Per Board: 50 uL Oil Pattern Distance: 33 Feet Volume Oil Total: 24.8 mL Total Boards Crossed: 496 Boards

Forward Oil Total: 16.5 mL
Forward Boards Crossed: 330 Boards

Reverse Oil Total: 8.3 mL
Reverse Boards Crossed: 166 Boards

Notes

	Start	Stop	Loads	Speed	Crossed	Start	End	Feet	T.Oil
1	2L	2R	4	10	148	0.0	4.2	4.2	7400
2	4L	3R	1	14	34	4.2	6.1	1.9	1700
3	5L	4R	1	18	32	6.1	8.6	2.5	1600
4	6L	5R	2	18	60	8.6	13.7	5.1	3000
5	7L	6R	2	18	56	13.7	18.8	5.1	2800
6	2L	2R	0	22	0	18.8	25.0	6.2	0
7	2L	2R	0	26	0	25.0	33.0	8.0	0

	Start	Stop	Loads	Speed	Crossed	Start	End	Feet	T.Oil
1	2L	2R	0	30	0	33.0	20.0	-13.0	0
2	6L	5R	1	22	30	20.0	16.9	-3.1	1500
3	5L	4R	2	18	64	16.9	11.8	-5.1	3200
4	3L	3R	1	18	35	11.8	9.3	-2.5	1750
5	2L	2R	1	14	37	9.3	7.4	-1.9	1850
6	2L	2R	0	14	0	7.4	0.0	-7.4	0

Conditioner:
Type In or Select One

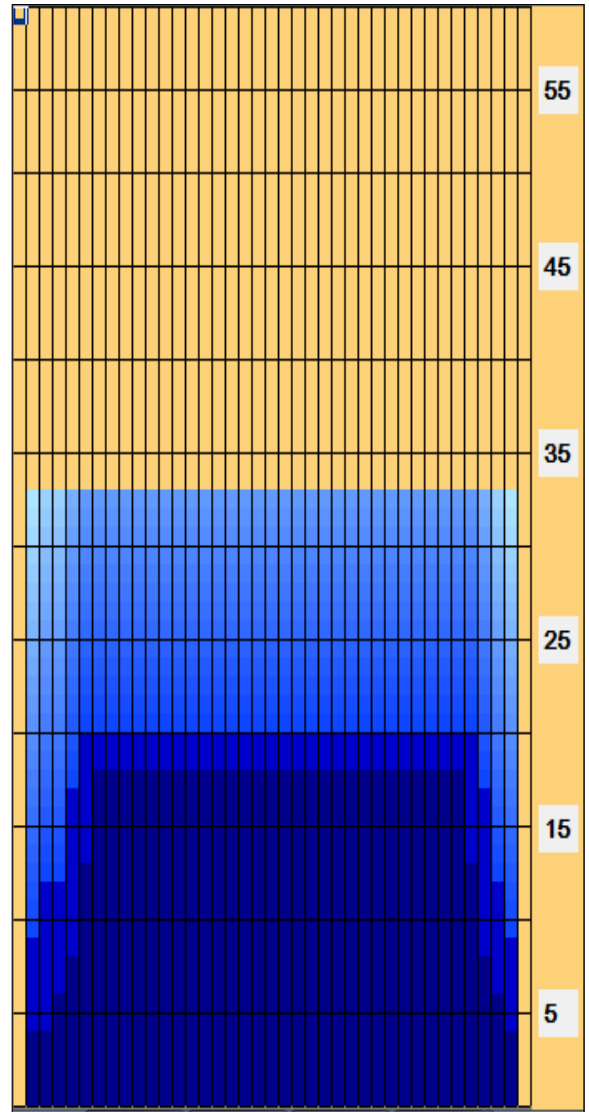
TransferType:
Type In or Select One

Forward

Reverse

Combined

Buff



Arrow Zone Ratios

Item	2-5L:16L-20	6-10L:16-20	11-15L:16L-20	16L-20:20-16R	16L-20:20-16R	20-16R:15-11R	20-16R:10-6R	20-16R:5-2R
ul Arrow	350	730	750	750	750	750	750	437.5
Zone Ratio	2.14	1.03	1	1	1	1	1	1.71

Track Zone Ratios

Item	3L-7L:18L-18R	8L-12L:18L-18R	13L-17L:18L-18R	18L-18R:17R-13R	18L-18R:12R-8R	18L-18R:7R-3R
Description	Outside Track:Middle	Middle Track:Middle	Inside Track:Middle	Middle: Inside Track	Middle:Middle Track	Middle:Outside Track
Track Zone Ratio	1.47	1	1	1	1	1.25

