



# K6-Krátké mazání - ratio 2,29 - České rekordy

Oil Per Board: 50 uL      Oil Pattern Distance: 36 Feet      Volume Oil Total: 23.7 mL      Total Boards Crossed: 474 Boards

Forward Oil Total: 15.65 mL  
Forward Boards Crossed: 313 Boards

Reverse Oil Total: 8.05 mL  
Reverse Boards Crossed: 161 Boards

Notes

	Start	Stop	Loads	Speed	Crossed	Start	End	Feet	T.Oil
1	2L	2R	2	14	74	0.0	1.9	1.9	3700
2	4L	4R	1	14	33	1.9	3.8	1.9	1650
3	6L	5R	1	14	30	3.8	5.7	1.9	1500
4	7L	6R	2	18	56	5.7	10.8	5.1	2800
5	8L	7R	2	18	52	10.8	15.9	5.1	2600
6	9L	8R	1	18	24	15.9	18.4	2.5	1200
7	10L	8R	1	18	23	18.4	20.9	2.5	1150
8	11L	9R	1	18	21	20.9	23.4	2.5	1050
9	2L	2R	0	22	0	23.4	31.0	7.6	0
10	2L	2R	0	30	0	31.0	36.0	5.0	0

Navigation: Forward Reverse More Info

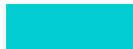
	Start	Stop	Loads	Speed	Crossed	Start	End	Feet	T.Oil
1	2L	2R	0	30	0	36.0	22.0	-14.0	0
2	6L	6R	1	22	29	22.0	18.9	-3.1	1450
3	5L	5R	2	22	62	18.9	12.7	-6.2	3100
4	4L	4R	1	22	33	12.7	9.6	-3.1	1650
5	2L	2R	1	14	37	9.6	7.7	-1.9	1850
6	2L	2R	0	14	0	7.7	0.0	-7.7	0

Navigation: Forward Reverse More Info

Conditioner:  
Type In or Select One

TransferType:  
Type In or Select One

Forward



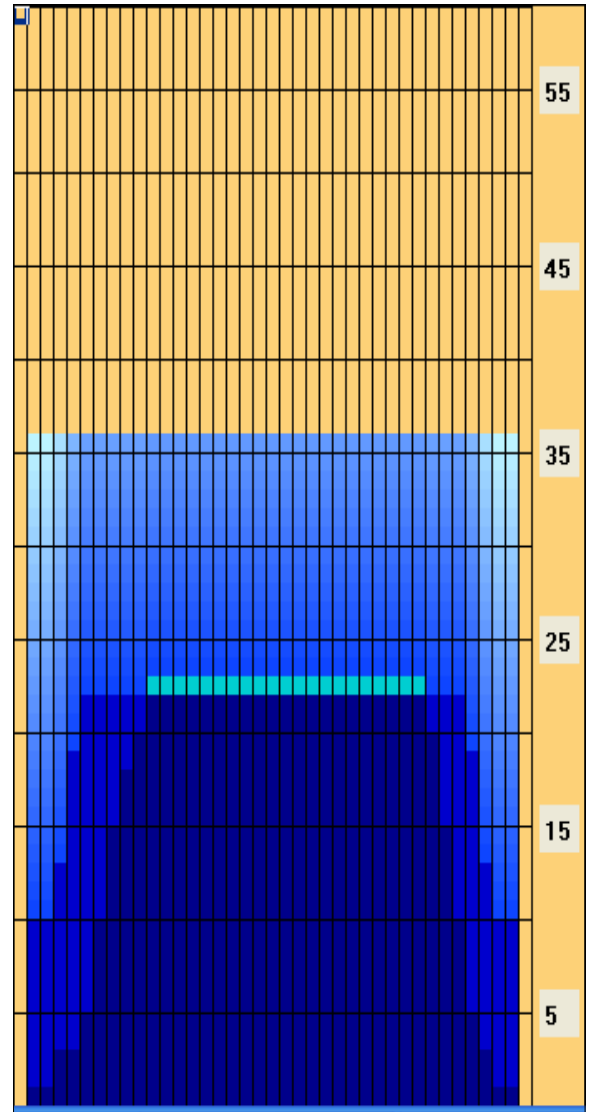
Reverse



Combined



Buff



Arrow Zone Ratios

Item	2-5L:16L-20	6-10L:16-20	11-15L:16L-20	16L-20:20-16R	16L-20:20-16R	20-16R:15-11R	20-16R:10-6R	20-16R:5-2R
ul Arrow	225	620	800	800	800	800	710	237.5
Zone Ratio	3.56	1.29	1	1	1	1	1.13	3.37

Track Zone Ratios

Item	3L-7L:18L-18R	8L-12L:18L-18R	13L-17L:18L-18R	18L-18R:17R-13R	18L-18R:12R-8R	18L-18R:7R-3R
Description	Outside Track:Middle	Middle Track:Middle	Inside Track:Middle	Middle: Inside Track	Middle:Middle Track	Middle:Outside Track
Track Zone Ratio	2.29	1.08	1	1	1.01	2

